

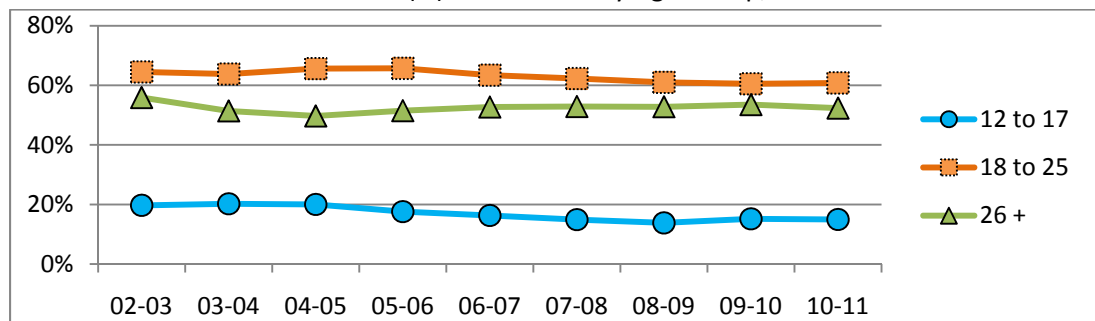
Substance Use by Age Group...



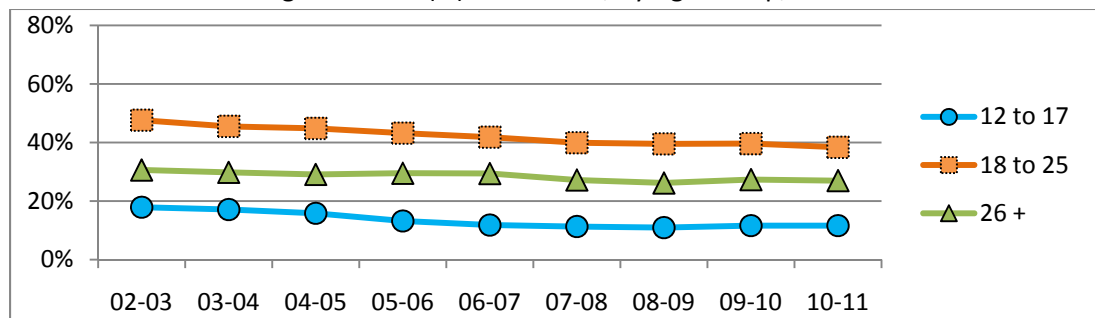
- ✦ Across all substances, those in the 18-25 year old category are the most likely to report past month use when compared to other age groups.¹
- ✦ Marijuana is one substance where the youngest respondents have use rates similar to adults (26+). Although not shown here, this is a pattern also seen in the category of “other illicit drugs”.

For more information please contact the BHEW at 314-877-5942 or susan.depue@mimh.edu

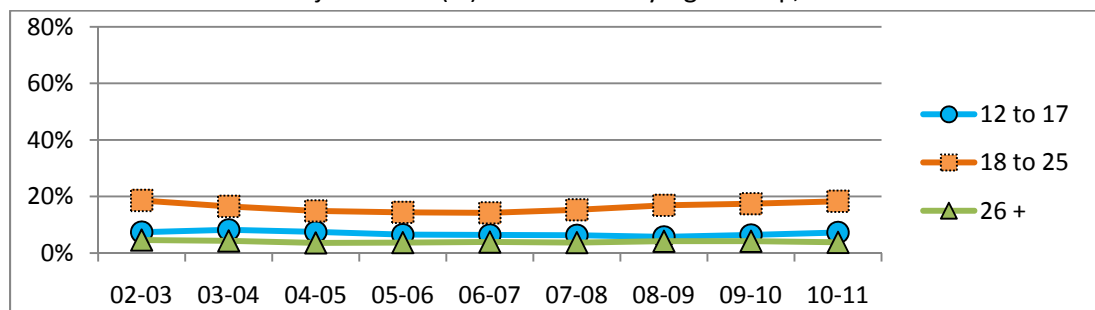
Estimated Past-Month Alcohol Use (%): In Missouri by Age Group, 2002-2011



Estimated Past-Month Cigarette Use (%) in Missouri, By Age Group, 2002-2011



Estimated Past-Month Marijuana Use (%): In Missouri by Age Group, 2002-2011



¹ Source: U.S. Dept. of Health and Human Services, SAMHSA. Estimates from the National Survey on Drug Use and Health. Two year averages displayed.