



Improving lives THROUGH  
supports and services  
THAT FOSTER self-determination.

# Environment Accessibility Adaptation (EAA) OT/PT Training

# Introduction

## UDAT (Universal Design & Assistive Technology)

- Shelly Brown
- Jason Elmore

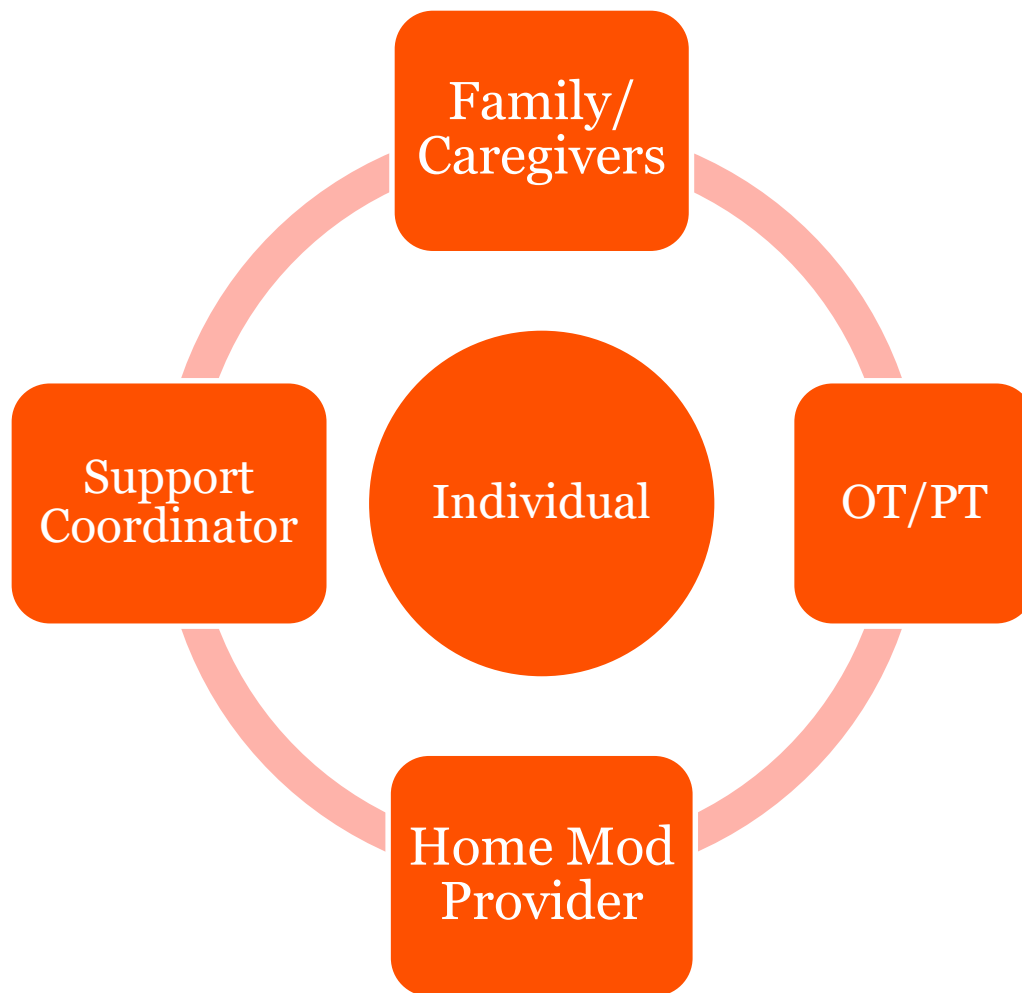
## MoHousing (Missouri Inclusive Housing)

- Wayne Crawford
- Cris Rodriguez

# Goals

- Increase understanding of the general EAA process
- Enhance consistency and content of evaluations specific to the EAA service

# Team



# Overview of EAA process



- Need for home or vehicle modification is identified



- OT/PT evaluation is requested for specific recommendations



- SC receives copy of evaluation and sends out to contractors to develop bids



- A bid is selected, SC requests approval from Regional Office



- Upon approval, work is completed, service is monitored by SC

EAA Process recorded webinar:

<https://dmh.mo.gov/sites/dmh/files/media/pdf/2021/12/eaapowerpoint.pdf>

# Waiver Service Definition

## Environmental Accessibility Adaptation (EAA)

Those physical adaptations required by the ISP, which are necessary to:

---

- ensure the health, welfare and safety of the individual
- which enable the individual to function with greater independence in the community
- and without which, the individual would require institutionalization.

# Waiver Definition Cont.

Such adaptations may include the installation of:

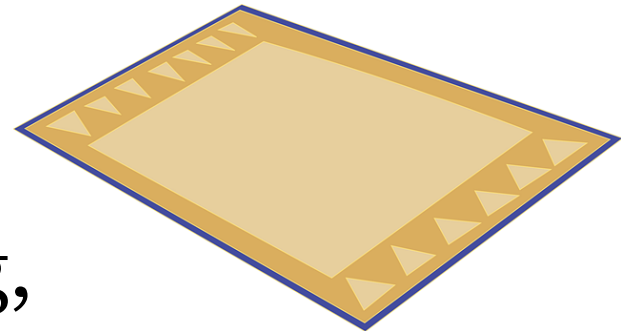
- ramps
- grab-bars,
- widening of doorways,
- modification of bathroom facilities, or
- installation of specialized electric and plumbing systems which are necessary to accommodate the medical equipment and supplies which are necessary for the welfare of the individual



# Waiver Definition Cont.

Shall exclude adaptations or improvements to the home which are not of direct medical or remedial benefit to the waiver individual, such as

- carpeting,
- roof repair,
- central air conditioning,
- etc.





# Waiver Definition Cont.

Adaptations that add to the total square footage of the home are excluded from this benefit except when necessary to complete an adaptation



# Justification

- Support Coordinators are required to provide justification for all DMH services being requested.
- Much of the justification for the EAA service will come from the evaluation and historical documentation or data.
- Evaluations are used to communicate needs to home modification contractors



# Components of Evaluation

The evaluation for EAA should ideally describe:

## 1. Functional Characteristics of the assessed individual



- difficulty standing, reaching, balance, stamina, ability to navigate steps, use of mobility aids, transfer needs, etc.

# Components of Evaluation

## 2. Description of current environmental barriers

- Detail what in the current environment is not working for the individual
- Are these things limiting independence or putting safety at risk when accessing?



# Components of Evaluation

## 3. Recommended modifications that would meet the individual's essential needs



- List specific changes to the environment that would improve access or remove the barriers
- Describe how the modifications will help the individual

# Components of Evaluation

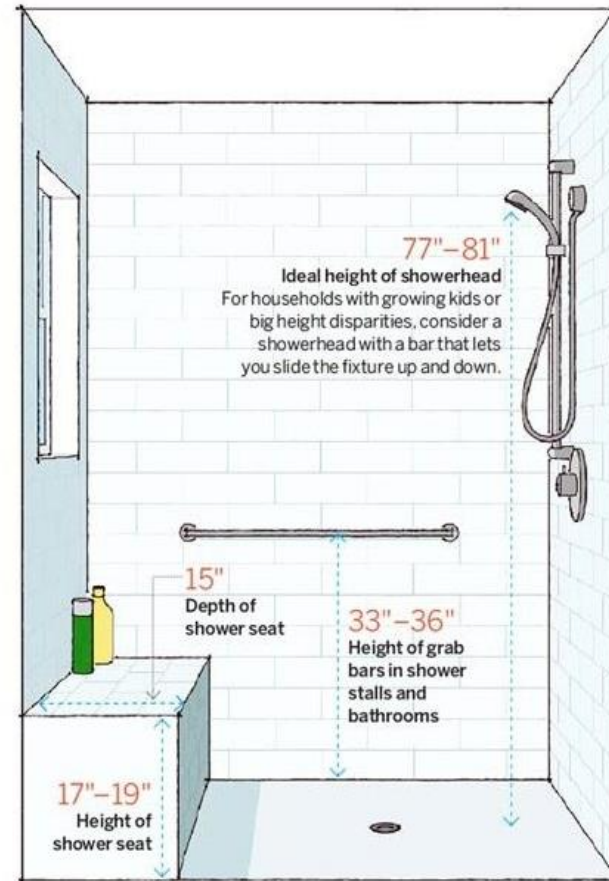
An optional OT/PT evaluation form  
can be found on the DD website:

<https://dmh.mo.gov/media/pdf/ot-pt-evaluation>

# Components of Evaluation

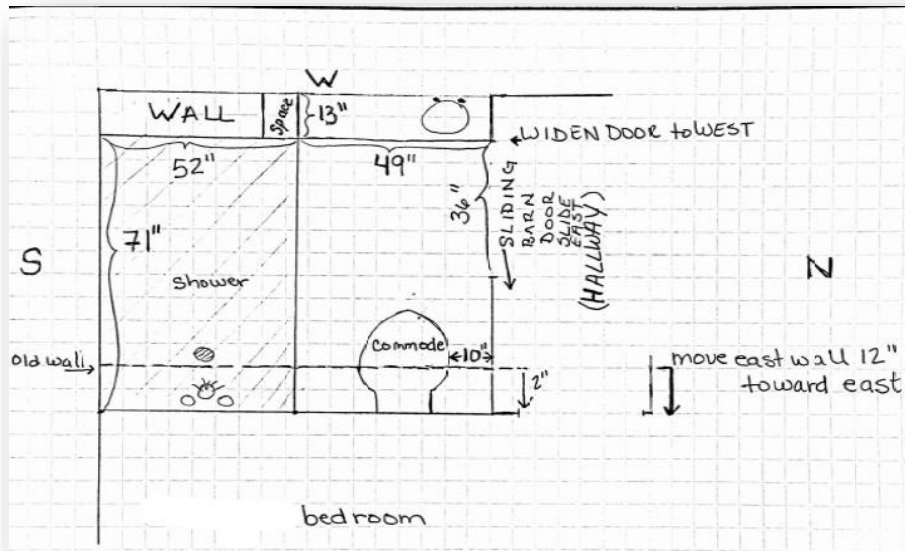
Some details can be helpful:

- min. dimensions
- layout
- examples of products
- required features
- etc.



# Visuals are helpful

Layout



Configuration



Examples of products





# Things to consider

## Limitations of the home mod providers

- Recommendations that are too general may lead to modifications being completed that do not work for the individual
  - Wrong dimensions
  - Products with wrong features
  - Non-optimal configurations

# Things to consider



- Door on left
- In-swinging door
- Narrow opening



- Door on right
- Out-swinging door
- Larger opening



- Door on front
- Smaller space



# Vehicle Modifications

## **DMH now allows funding towards pre-installed modifications in a vehicle**

In these cases, evaluations will need to determine that the existing modification in the vehicle will work for the individual



# Things to consider

- **Are safety concerns related to accessibility and do modifications benefit the individual directly?**



- Risk of injury to individual or caregiver
- Safety issues would not include those things related to maintenance such as moisture control/mold growth, deteriorating wall, loose floor tiles, or other items in disrepair

# Things to consider

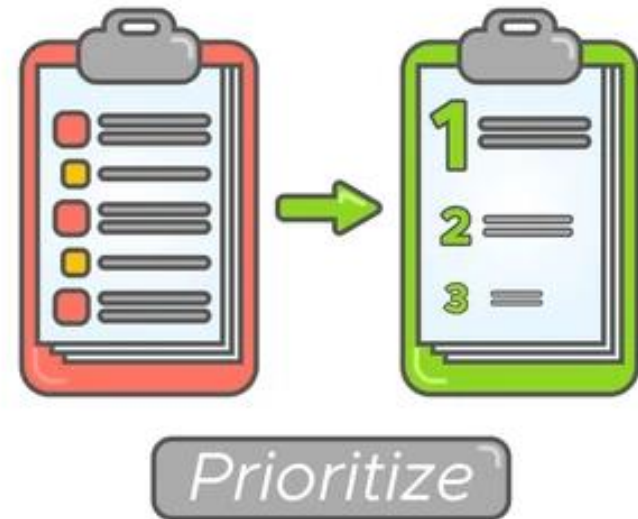
## Limitations of the EAA service

- \$10,000 max budget cap
- Home mod providers cannot split a single project into multiple funding years.



# Things to consider

If there are multiple recommendations in the evaluation, the SC, individual/caregiver, and therapist may need to determine which modifications would be a priority if they cannot all be done at once due to funding limitations.



# Things to consider

## Limitations of the home mod providers



- EAA service will only pay contracted providers for work recommended in the evaluation
- Contractors are dependent on evaluation to develop accurate bids

# Things to consider

## Collaboration with home modification providers

- Providers may suggest alternative options if there are potential issues regarding space or structural feasibility
- May be necessary to assist team in modifying plans and ensuring any changes will still meet the individuals needs



# Contact Info.

For any questions about EAA  
processes or requirements, email  
the UDAT Team at:

[technologyfirstanduniversaldesign@dmh.mo.gov](mailto:technologyfirstanduniversaldesign@dmh.mo.gov)



Improving lives THROUGH  
supports and services  
THAT FOSTER self-determination.

**QUESTIONS??**