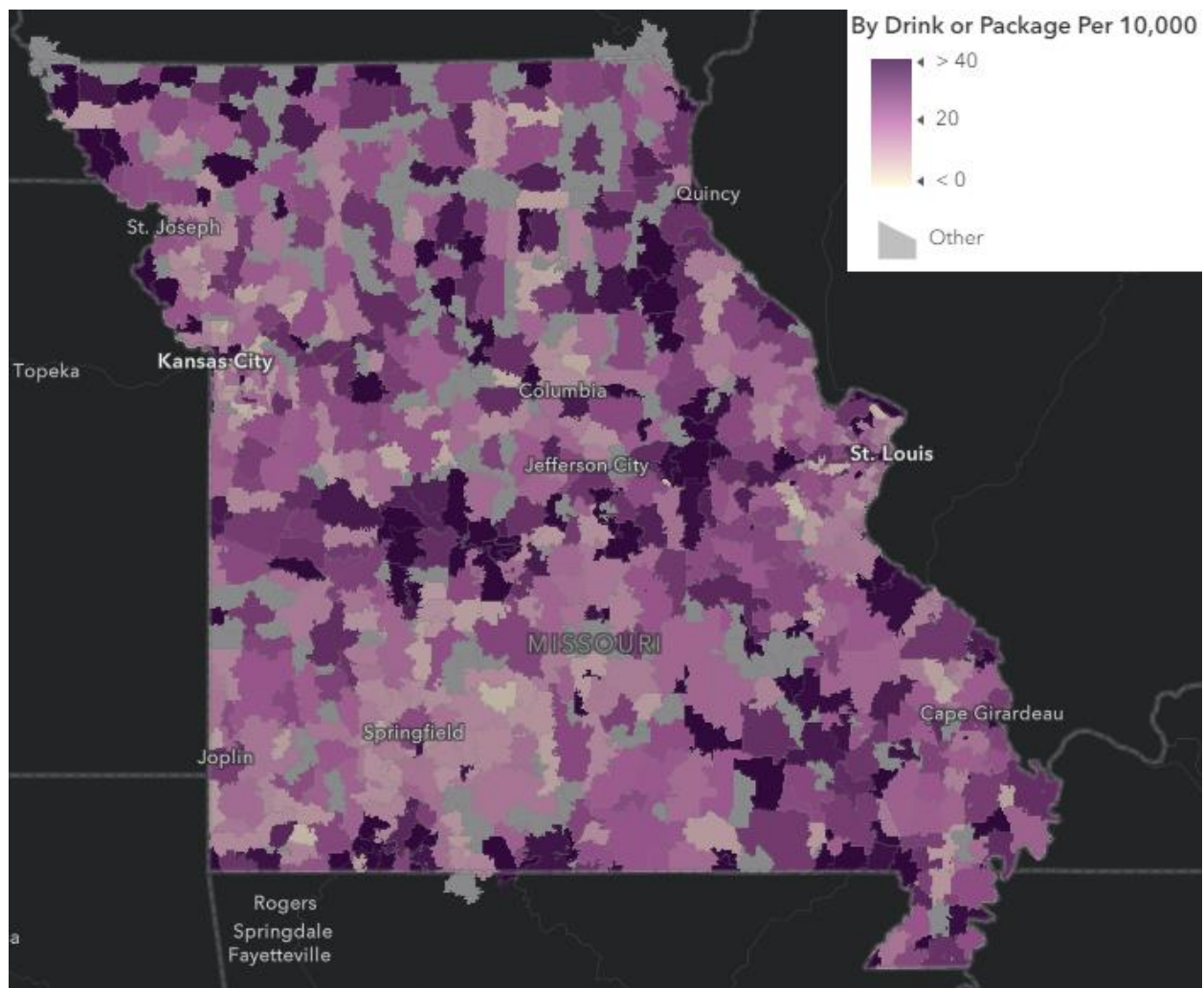


ALCOHOL RETAILER DENSITY IN MISSOURI

In February 2024, the Behavioral Health and Epidemiological Workgroup collected and mapped liquor license data posted by the State of Missouri on data.mo.gov. The data below represents the amount of alcohol retailers that sell either by drink (such as bars and restaurants) or by the package (such as gas stations and grocery stores) per 10,000 residents by Zipcode Tabulation Area. Areas with a zero population or zero alcohol retailers were excluded from the data and are shown in gray. Retailer density numbers can be obtained by contacting the BHEW.

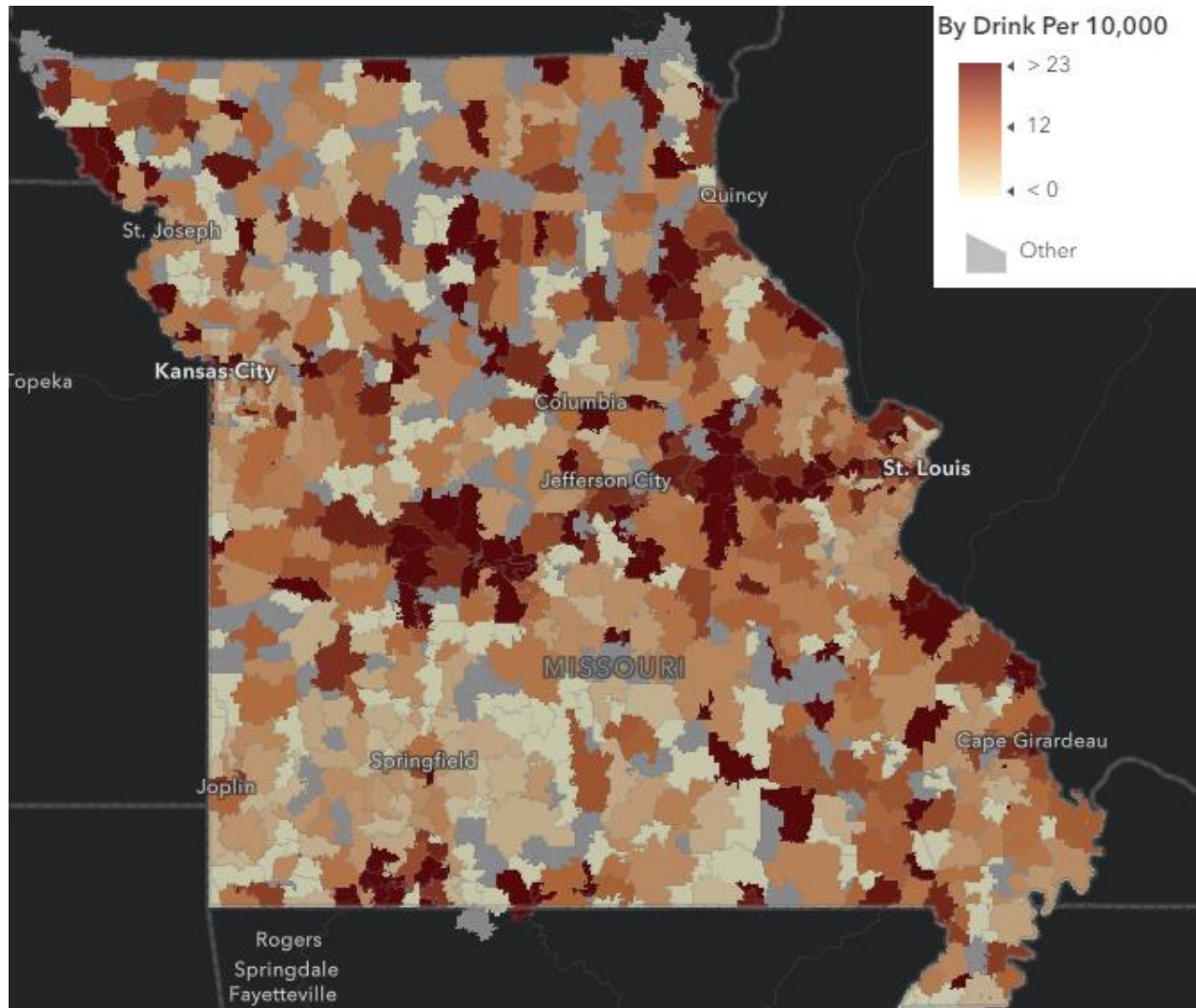
BY DRINK OR PACKAGE

Alcohol retailers who sell by drink or by package are dense per 10,000 residents across the state. However, the northwest of the state along with central and southeastern regions show higher retailer density per resident than other parts of the state. Southwest Missouri appears to have the least density on average though many of the border zip codes contradict the norm in the area.



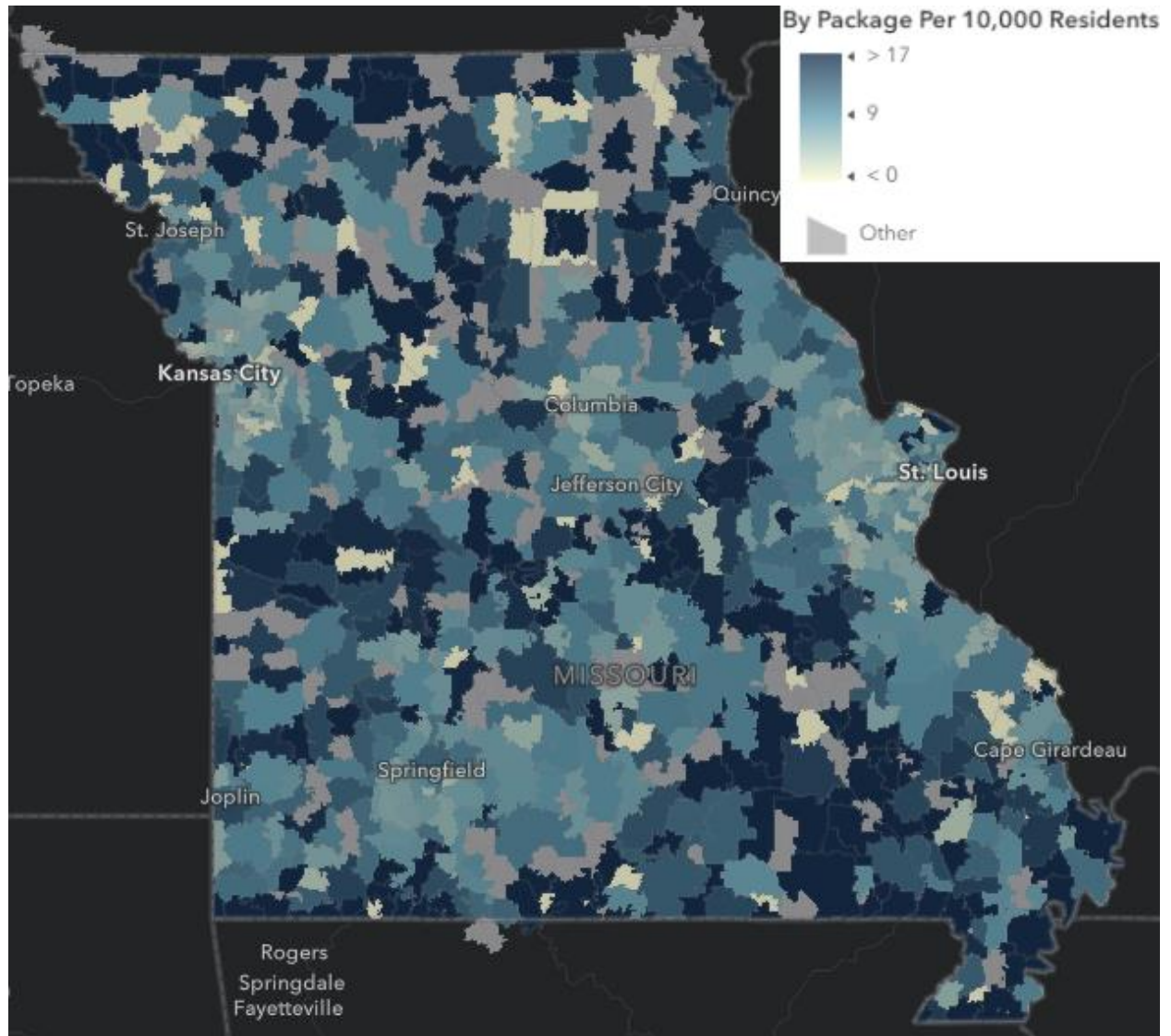
BY DRINK

Alcohol retailers who sell by drink, such as bars, restaurants, microbreweries, or wineries appear to be dense per 10,000 residents in rural central Missouri. Southwest Missouri seems to have a lower alcohol retailer density on average than the rest of the state.



BY PACKAGE

Alcohol retailers who sell by package appear to be densely located per 10,000 residents across the entire state. Southeast Missouri, western Missouri, and northern Missouri appear to particularly have higher density on average than the rest of the state.



Contact the Behavioral Health Epidemiological Workgroup:

314.516.8412

susan.bradford@mimh.edu

Find more data at **seow.dmh.mo.gov**!